

**810 Tejas Village
Pkwy**

BEASLEY, TX 77417

Priced At

\$275,612

FirstAmericaHomes.com

[#BuiltDifferent](https://twitter.com/BuiltDifferent)

[@firstamerica_homes](https://www.instagram.com/firstamerica_homes)



PLAN

Guadalupe

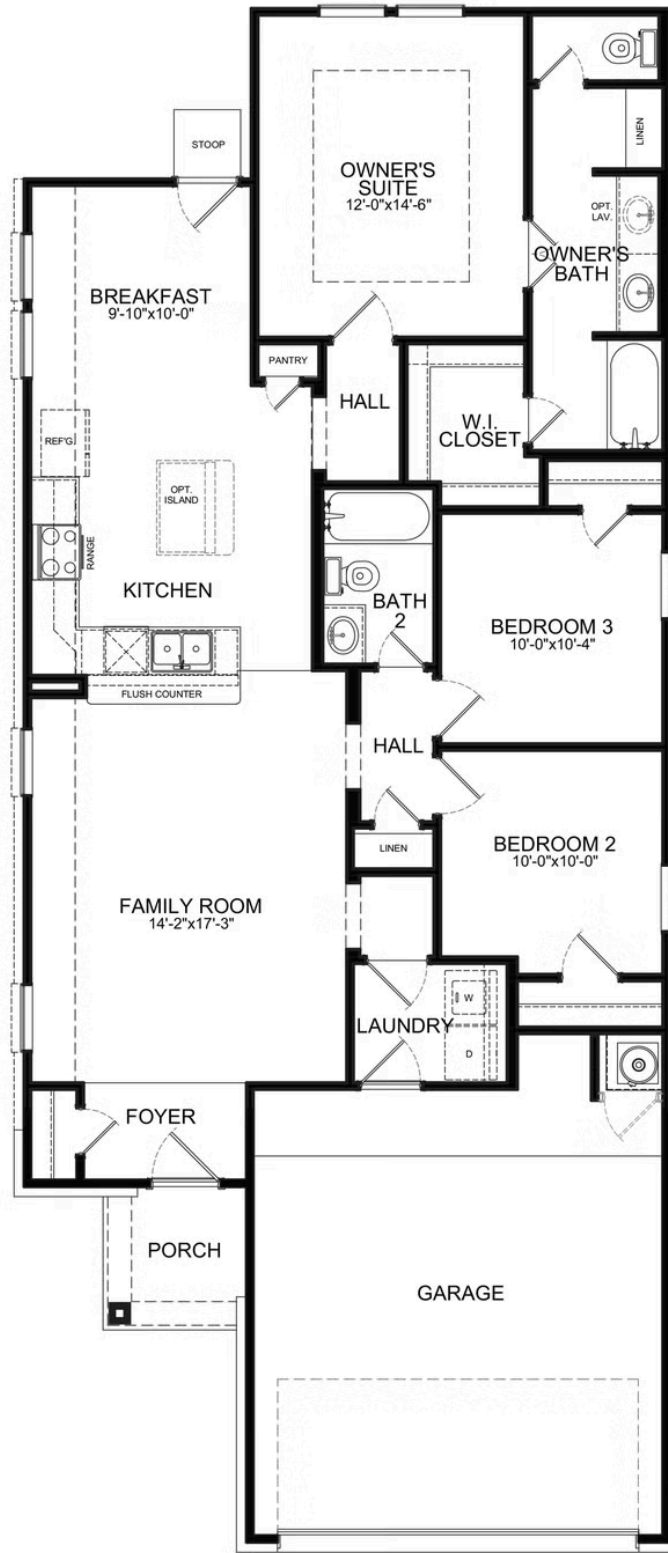
HOME FEATURES

- 1,364 Sq. Ft.
- 3 Bedrooms
- 2 Full Baths
- 1 Stories
- 2 Garages

This beautiful open concept home is designed for those who appreciate simplicity without compromising on luxury. This thoughtful design offers an array of high-end features, including a large walk-in closet and a tray ceiling in the spacious master retreat. The simplicity of the design allows for a seamless flow between the living spaces, creating a sense of openness and versatility. The kitchen can be further enhanced by adding the optional island, providing additional counter space and a focal point for culinary activities. For those who enjoy outdoor living, the addition of a spacious covered patio creates the perfect setting for hosting impressive gatherings. Whether you seek a tranquil retreat or a place to host memorable events, this open concept home provides the perfect canvas to bring your vision to life.



GUADALUPE FIRST FLOOR



Prices, community features, amenities, specifications and rates subject to change without notice. Colors and features may differ from shown representation.

Updated 05/11/2025