

430 Tejas Village
Pkwy

BEASLEY, TX 77417

Priced At

\$343,003

FirstAmericaHomes.com

#FAHBuiltDifferent

@firstamericaHomes



PLAN

Linden

HOME FEATURES

- 2,125 Sq. Ft.
- 4 Bedrooms
- 3 Full Baths
- 2 Stories
- 2 Garages

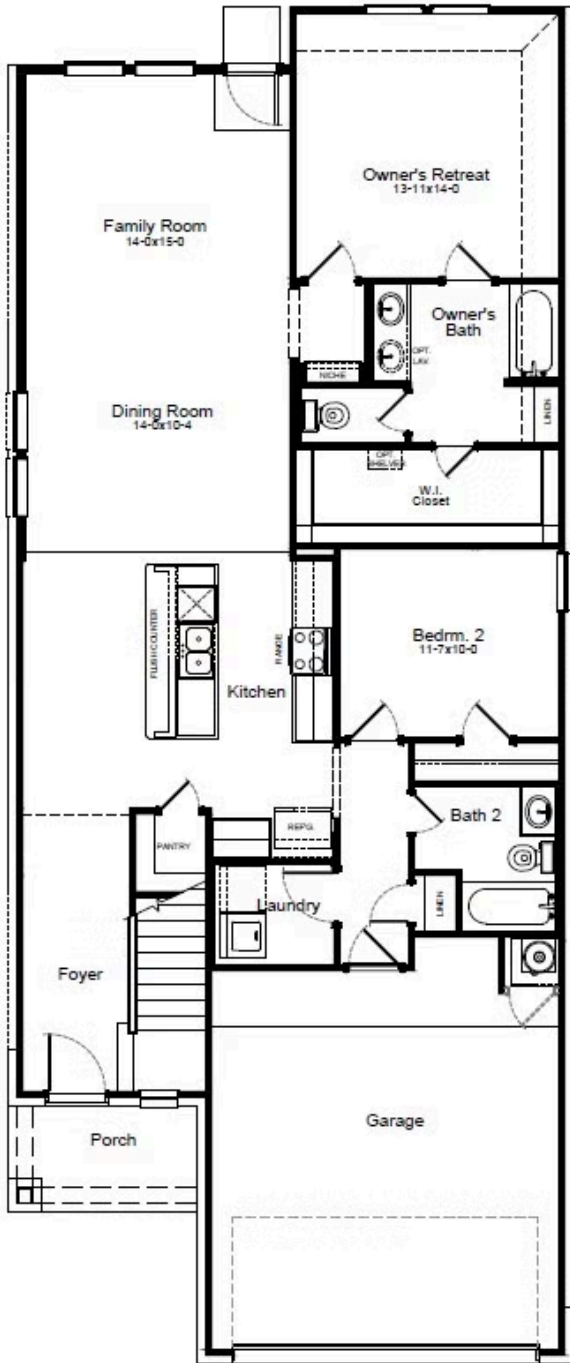
The Linden is a spacious and versatile 4-bedroom, 3-bathroom home designed for modern living. The open-concept downstairs layout seamlessly connects the kitchen, dining and living areas, creating the perfect space for gathering and entertaining. The large owner's retreat features a walk-in closet. Upstairs, a generous gameroom provides extra space for fun and relaxation, while the fourth bedroom can easily serve as a home office. The Linden offers the perfect combination of space, style and flexibility.

This new move-in ready home in Beasley, TX delivers modern design with open living spaces, a well-appointed kitchen and energy-saving features built to last. Its location within the [Tejas Village community in Beasley, TX](#), provides easy access to local shopping, dining and outdoor activities, making it a smart choice for buyers who want the benefits of new construction without the wait.



LINDEN FLOORPLAN

1st Floor



2nd Floor

