

8015 Alamo Ct
BEASLEY, TX 77417

Priced At
\$289,843

FirstAmericaHomes.com

[#BuiltDifferent](https://twitter.com/BuiltDifferent)

[@firstamerica_homes](https://www.instagram.com/firstamerica_homes)



PLAN

Neches

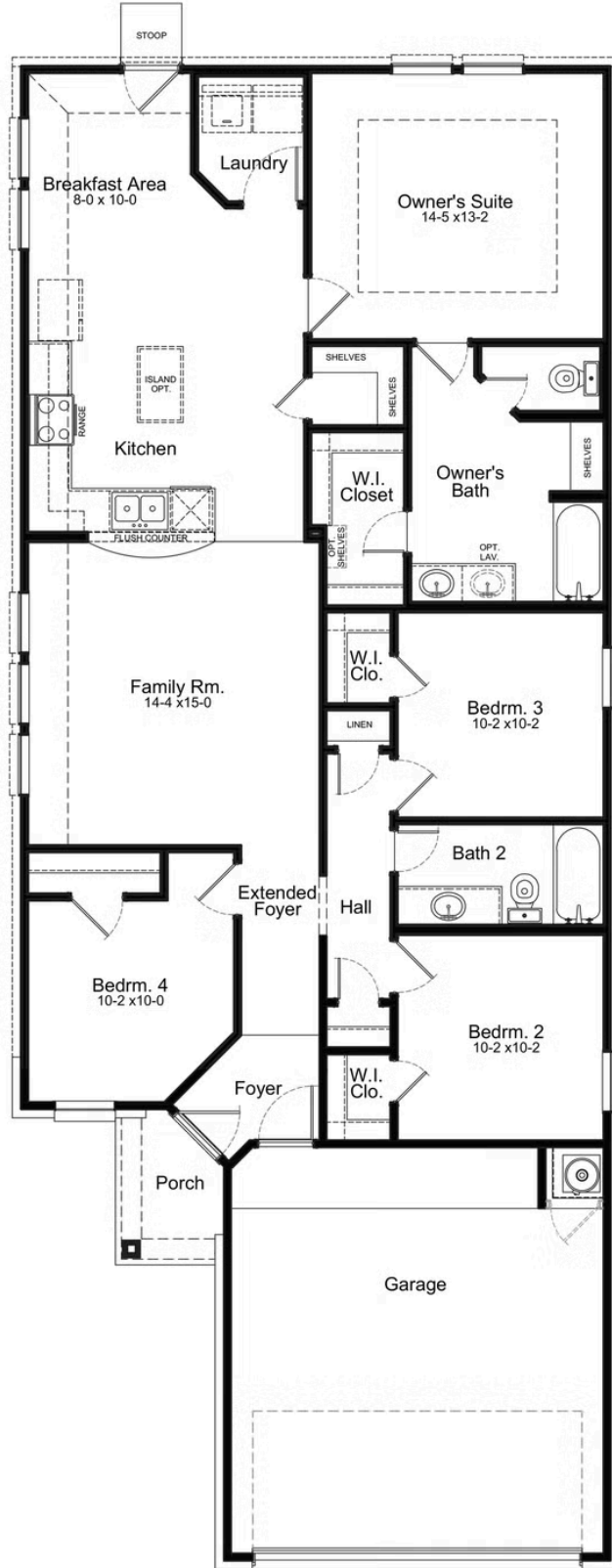
HOME FEATURES

- 1,535 Sq. Ft.
- 4 Bedrooms
- 2 Full Baths
- 1 Stories
- 2 Garages

With a focus on space optimization, this floor plan offers a versatile layout that caters to everyone's needs. Featuring four bedrooms and two bathrooms, it provides ample room for comfortable living. The kitchen and breakfast area are seamlessly connected, creating a fluid and inviting space for dining. The large living area is designed to maximize natural light, creating a bright and airy atmosphere.



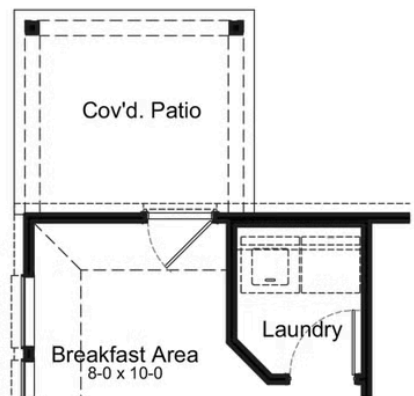
NECHES FIRST FLOOR



Prices, community features, amenities, specifications and rates subject to change without notice. Colors and features may differ from shown representation.

Updated 05/11/2025

NECHES OPTIONS



Covered Patio Option



Expanded Covered Patio Option



Enhanced Owner's Bath Option

