

3057 Plateau Drive
BROOKSHIRE, TX 77423

Priced At
\$338,175

FirstAmericaHomes.com

#FAHBuiltDifferent

@firstamericaHomes



PLAN

Birch

HOME FEATURES

- 2,026 Sq. Ft.
- 3 Bedrooms
- 2 Full Baths
- 1 Half Bath
- 2 Stories
- 2 Garages

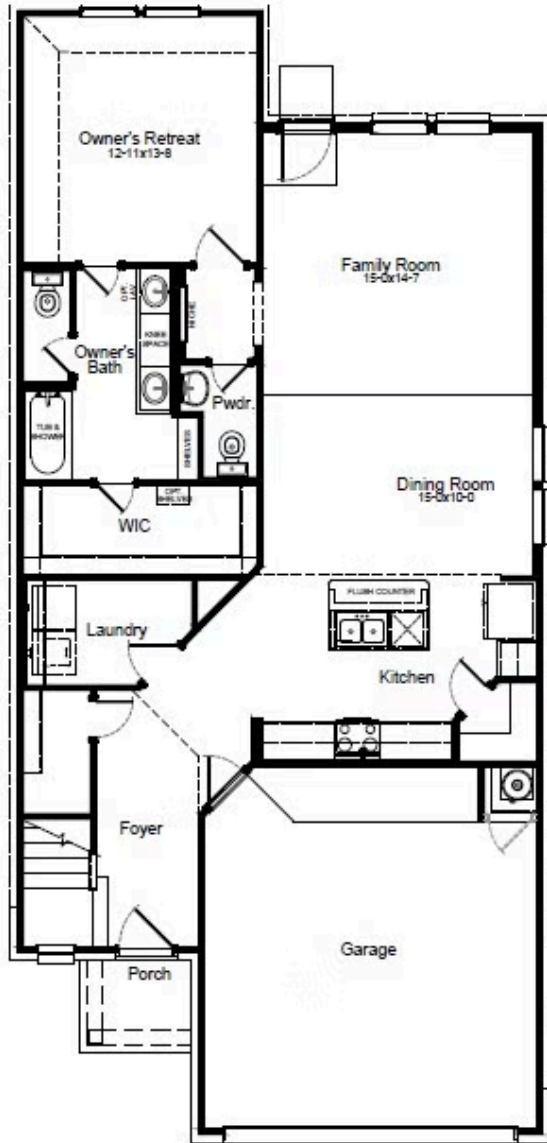
The Birch is a thoughtfully designed three-bedroom, two-and-a-half-bathroom home with soaring ceilings that create an open and airy feel throughout the main living spaces. The spacious owner's retreat provides a private escape for ultimate relaxation. Upstairs, a versatile gameroom creates the ideal space for entertainment, work or play. Designed for modern living, the Birch is a home that fits your lifestyle.

This new move-in-ready home in Brookshire, TX delivers modern design with open living spaces, a well-appointed kitchen and energy-saving features built to last. Its location within the [Bluestem community](#) in Brookshire, TX, provides easy access to local shopping, dining and outdoor activities, making it a smart choice for buyers who want the benefits of new construction without the wait.



BIRCH FLOORPLAN

1st Floor



2nd Floor

