

3080 Plateau Drive
BROOKSHIRE, TX 77423

Priced At
\$264,189

FirstAmericaHomes.com

[#BuiltDifferent](https://twitter.com/BuiltDifferent)

[@firstamerica_homes](https://www.instagram.com/firstamerica_homes)



PLAN

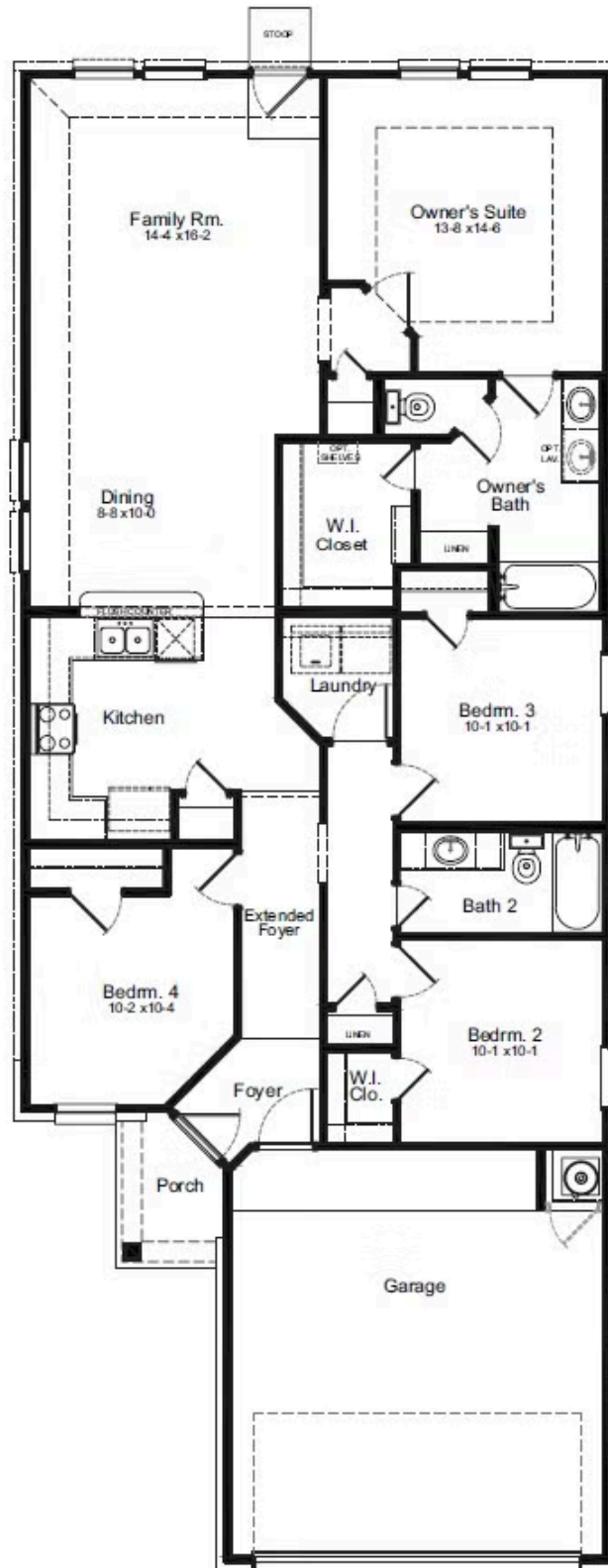
San Marcos

HOME FEATURES

- 1,533 Sq. Ft.
- 4 Bedrooms
- 2 Full Baths
- 1 Stories
- 2 Garages

The San Marcos floor plan is a spacious 4-bedroom, 2-bathroom home designed for comfortable living. The living and dining area provides ample space for hosting gatherings, allowing you to entertain family and friends with ease. The kitchen is well-equipped with plenty of counter space, providing a functional and convenient area for meal preparation and cooking. The San Marcos floor plan strikes a balance between practicality and comfort, making it an inviting home for individuals and families alike.

SAN MARCOS 1ST FLOOR



Prices, community features, amenities, specifications and rates subject to change without notice. Colors and features may differ from shown representation.

Updated 05/9/2025