

10607 FLIGHT DECK COURT CONROE, TX 77303

713.897.8986

Mansfield

CIELO, CONROE, TX

Home Starting At

\$304,990

[FirstAmericaHomes.com](https://www.FirstAmericaHomes.com)

[@firstamericahomes](https://www.instagram.com/firstamericahomes)



HOME FEATURES

- 2,416 Sq. Ft.
- 5 - 6 Beds
- 2.5 - 3 Baths
- 2 Stories
- 2 Garages

The Mansfield floorplan, designed with 2,416 square feet of space, offers a unique blend of comfort and style, perfect for modern living. This home features an inviting entrance that seamlessly connects to the spacious family room and kitchen for memorable gatherings. With five bedrooms, including an owner's suite with a walk-in closet and a luxurious bath, privacy and comfort are paramount. Additional highlights include a versatile study, a spacious laundry room, and a covered patio, perfect for outdoor enjoyment. The Mansfield is a testament to quality craftsmanship, blending functionality with elegance to create a space that feels like home.

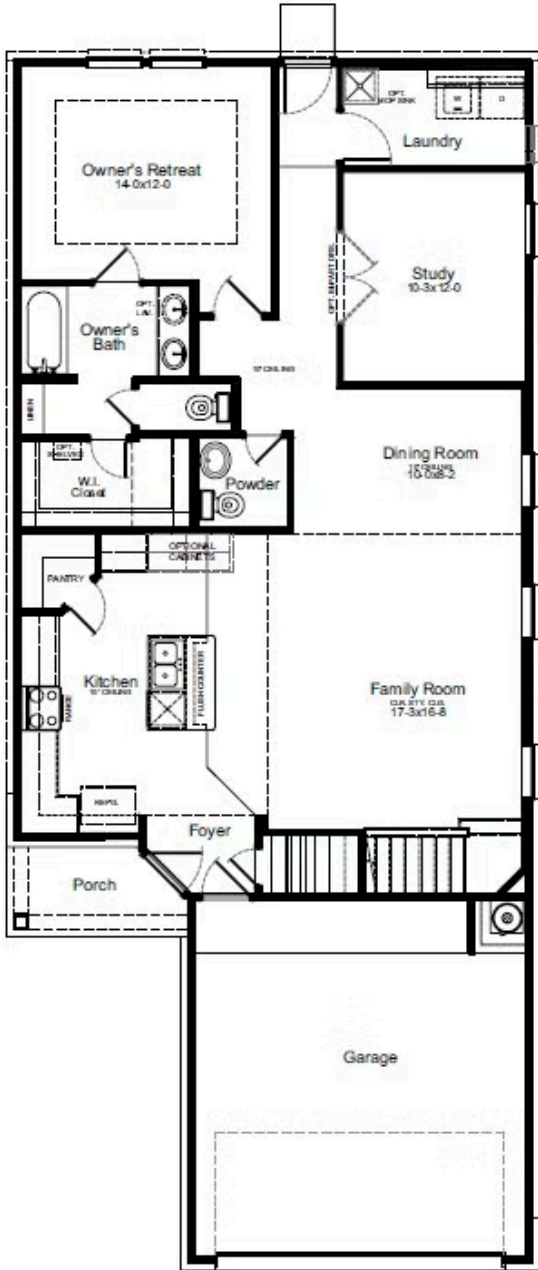


All information contained in this marketing material, including but not limited to pricing, availability, features, dimensions, specifications, drawings, maps, photographs, renderings, and other content, is provided for general informational purposes only and is subject to change without notice. While reasonable efforts have been made to ensure accuracy, First America Homes makes no warranties or representations, express or implied, as to the completeness, accuracy, or reliability of the information presented. First America Homes reserves the right, in its sole discretion and without prior notice, to modify, revise, or withdraw any information, plans, designs, pricing, or availability at any time. This material does not constitute a contract, offer, or promise and should not be relied upon as such. All sales are subject to the terms and conditions of the applicable purchase agreement. Void where prohibited by law.

Updated 07/6/2026

MANSFIELD FLOORPLAN

1st Floor



2nd Floor

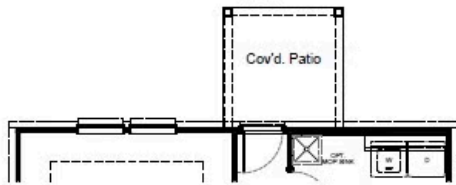


All information contained in this marketing material, including but not limited to pricing, availability, features, dimensions, specifications, drawings, maps, photographs, renderings, and other content, is provided for general informational purposes only and is subject to change without notice. While reasonable efforts have been made to ensure accuracy, First America Homes makes no warranties or representations, express or implied, as to the completeness, accuracy, or reliability of the information presented. First America Homes reserves the right, in its sole discretion and without prior notice, to modify, revise, or withdraw any information, plans, designs, pricing, or availability at any time. This material does not constitute a contract, offer, or promise and should not be relied upon as such. All sales are subject to the terms and conditions of the applicable purchase agreement. Void where prohibited by law.

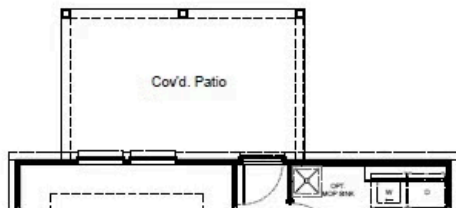
Updated 07/6/2026

MANSFIELD OPTIONS

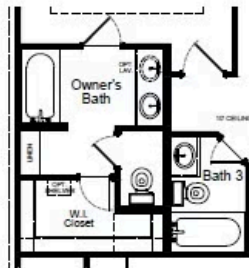
Options



Covered Patio



Expanded Covered Patio



Bath 3
ILO Powder



Bedroom 6
ILO Study



Luxury Bath Option



All information contained in this marketing material, including but not limited to pricing, availability, features, dimensions, specifications, drawings, maps, photographs, renderings, and other content, is provided for general informational purposes only and is subject to change without notice. While reasonable efforts have been made to ensure accuracy, First America Homes makes no warranties or representations, express or implied, as to the completeness, accuracy, or reliability of the information presented. First America Homes reserves the right, in its sole discretion and without prior notice, to modify, revise, or withdraw any information, plans, designs, pricing, or availability at any time. This material does not constitute a contract, offer, or promise and should not be relied upon as such. All sales are subject to the terms and conditions of the applicable purchase agreement. Void where prohibited by law.

Updated 07/6/2026