

Polk

HICKORY RIDGE, ELMENDORF, TX

Home Starting At

\$323,990

FirstAmericaHomes.com

#FAHBuiltDifferent

@firstamericaHomes



HOME FEATURES

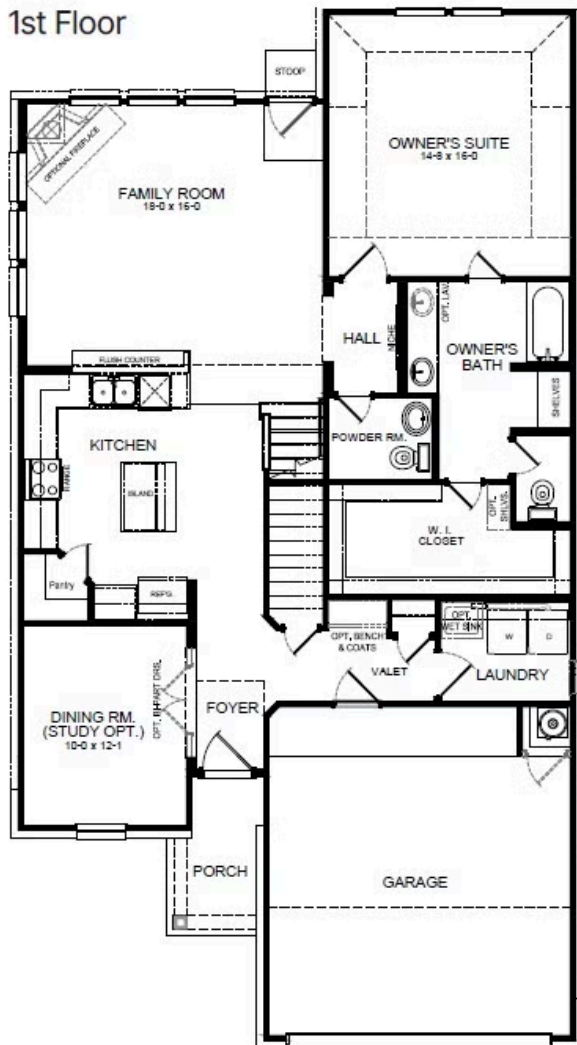
- 2,366 Sq. Ft.
- 4 Beds
- 2.5 Baths
- 2 Stories
- 2 Garages

The Polk floorplan is an elegant four-bedroom, two-and-a-half bath home with the option for a fifth bedroom or media room. A grand two-story foyer welcomes you, leading to a bright living room with large windows that fill the space with natural light. The open kitchen, featuring a spacious peninsula bar, is both stylish and functional - perfect for entertaining. The oversized owner's suite offers a luxurious retreat with an enormous walk-in closet for ample storage. Choose between two luxury bathroom options to create a spa-like experience. Upstairs, the gameroom provides versatile space to relax and enjoy. An optional study adds flexibility, making the Polk floorplan ideal for families seeking both comfort and functionality.

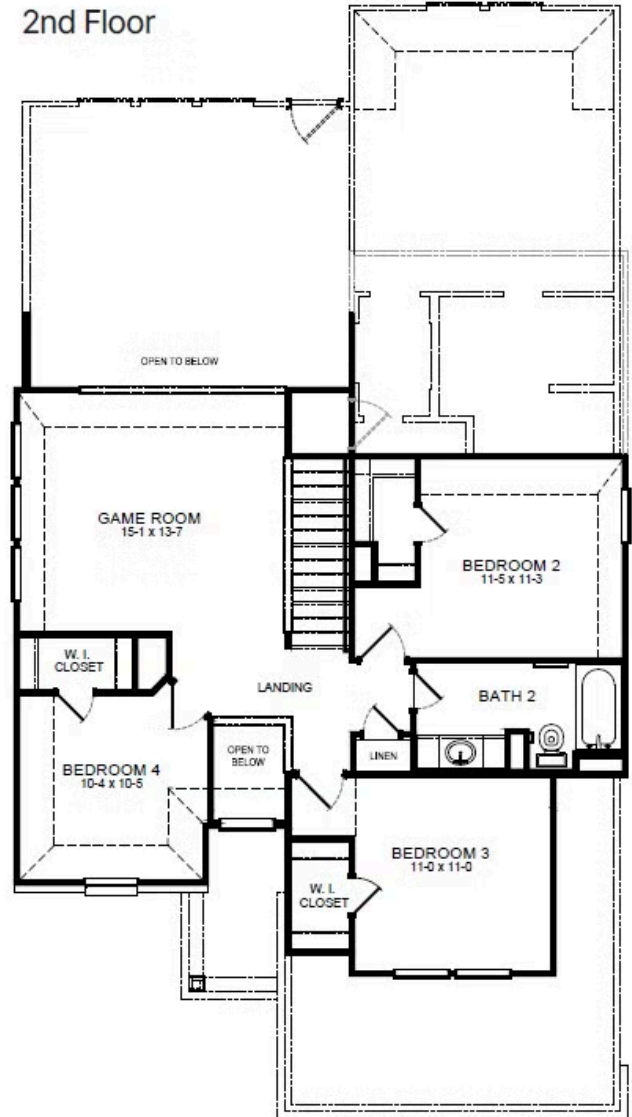


POLK FLOORPLAN

1st Floor

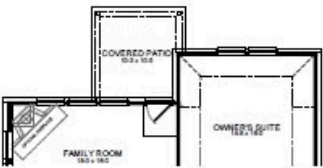


2nd Floor

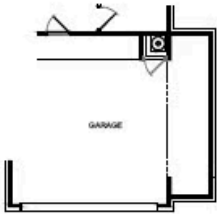


POLK OPTIONS

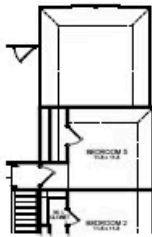
Options



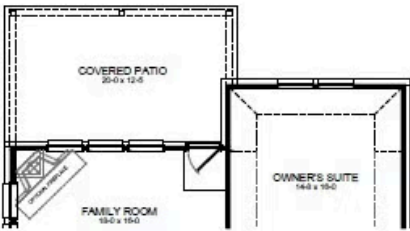
Covered Patio



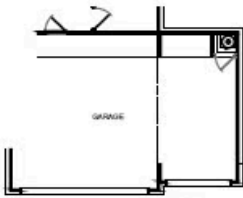
2 1/2 Car Garage



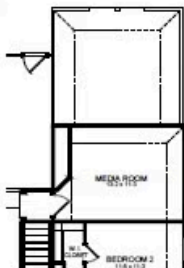
Bedroom 5



Expanded Covered Patio



3 Car Garage



Media Room
ILO Bedroom 5



Luxury
Bath Option

