

2310 Pink Pearl Drive
SAN ANTONIO, TX 78224

Priced At
\$357,990

FirstAmericaHomes.com

#FAHBuiltDifferent

@firstamericahomes



PLAN

Birch

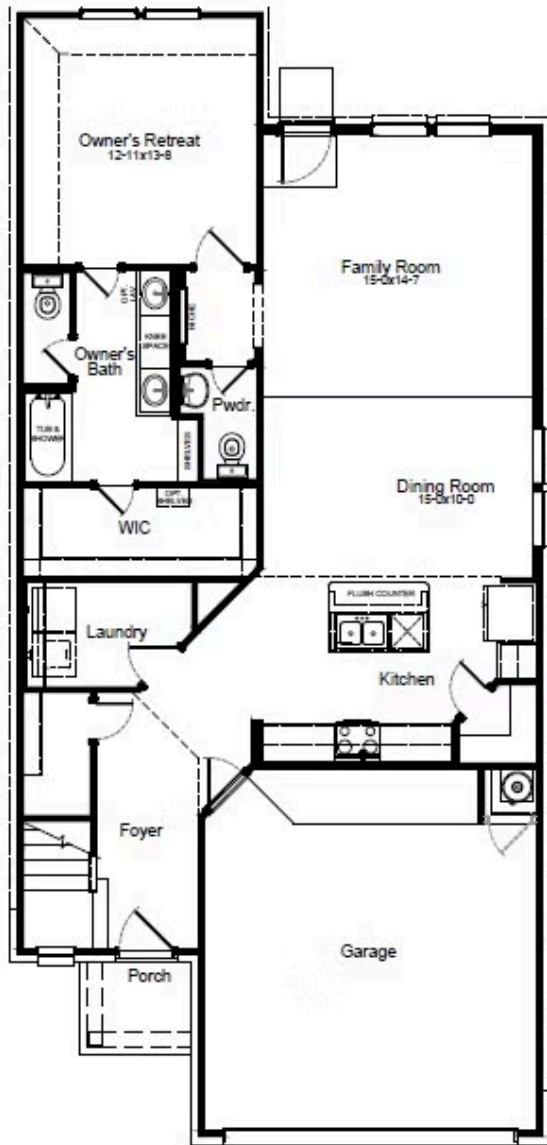
HOME FEATURES

- 2,026 Sq. Ft.
- 3 Bedrooms
- 2 Full Baths
- 1 Half Bath
- 2 Stories
- 2 Garages

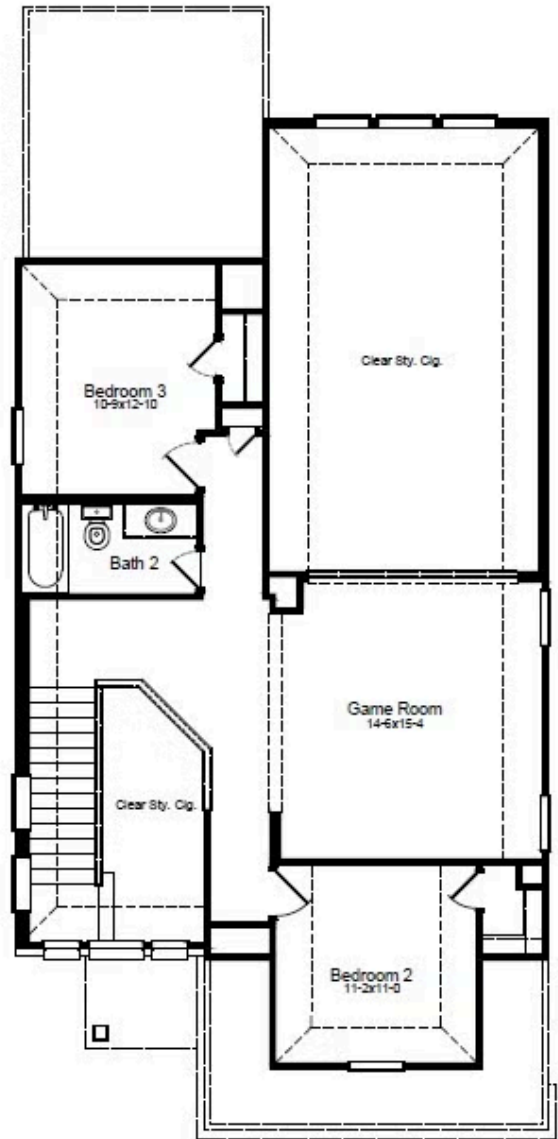
The Birch is a thoughtfully designed three-bedroom, two-and-a-half-bathroom home with soaring ceilings that create an open and airy feel throughout the main living spaces. The spacious owner's retreat provides a private escape, with the option to upgrade to a luxury bath for added relaxation. Upstairs, a versatile gameroom creates the ideal space for entertainment, work or play. Extend your living space outdoors with a covered patio and enjoy the outdoors year-round. Designed for modern living, the Birch is a home that fits your lifestyle.

BIRCH FLOORPLAN

1st Floor

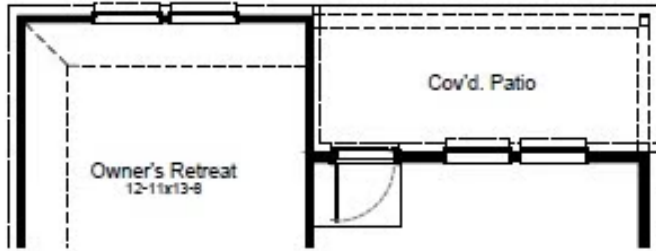


2nd Floor

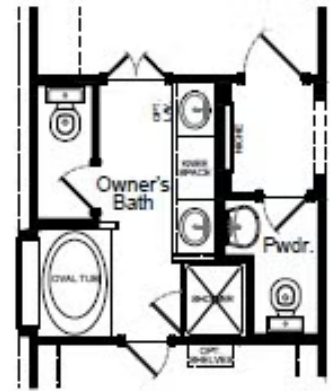


BIRCH OPTIONS

Options



Covered Patio



Luxury Bath Option

