

8625 Merlin CV
SAN ANTONIO, TX 78222

Priced At
\$312,000

FirstAmericaHomes.com

[#FAHBuiltDifferent](https://twitter.com/FAHBuiltDifferent)

[@firstamerica_homes](https://www.instagram.com/firstamerica_homes)



PLAN

Telluride

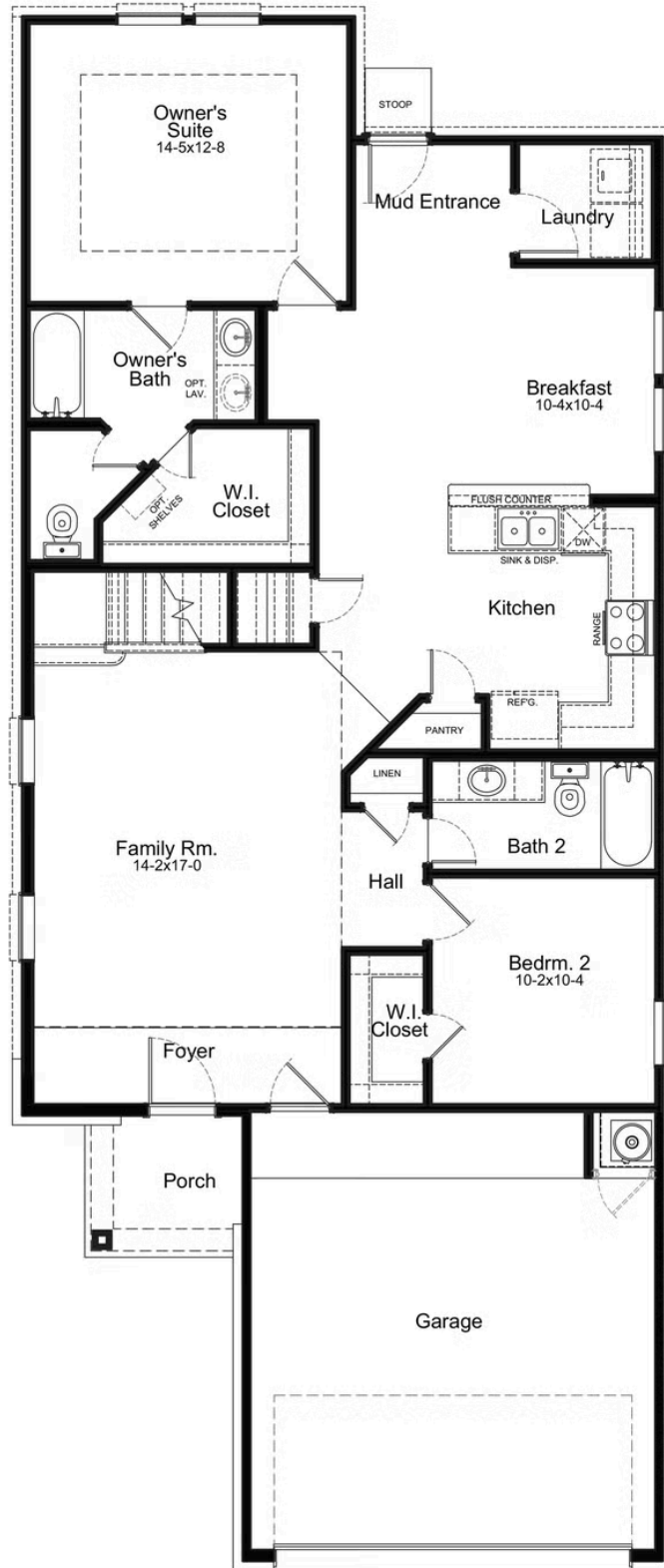
HOME FEATURES

- 1,995 Sq. Ft.
- 4 Bedrooms
- 3 Full Baths
- 2 Stories
- 2 Garages

The Telluride floor plan is designed to impress. The first floor of this home provides a well-designed layout, beginning with a spacious living room that serves as the heart of the home. Adjacent to the living room, you'll find the kitchen and dining area, which are perfect for culinary adventures and enjoying meals together. The first floor also features the owner's suite, providing a serene retreat for homeowners. Additionally, another bedroom on this level offers versatility, serving as a guest room, home office, or even a playroom for kids. Moving upstairs, you'll discover a game room, creating a dedicated space for entertainment and leisure activities. This layout offers a perfect balance of functionality and comfort, providing versatile spaces for relaxation, entertainment, and privacy.



TELLURIDE 1ST FLOOR



TELLURIDE 2ND FLOOR

