

14930 Fischer Garden
SAN ANTONIO, TX 78253

Priced At
\$339,990

FirstAmericaHomes.com

#FAHBuiltDifferent

@firstamericaHomes



PLAN

Roosevelt

HOME FEATURES

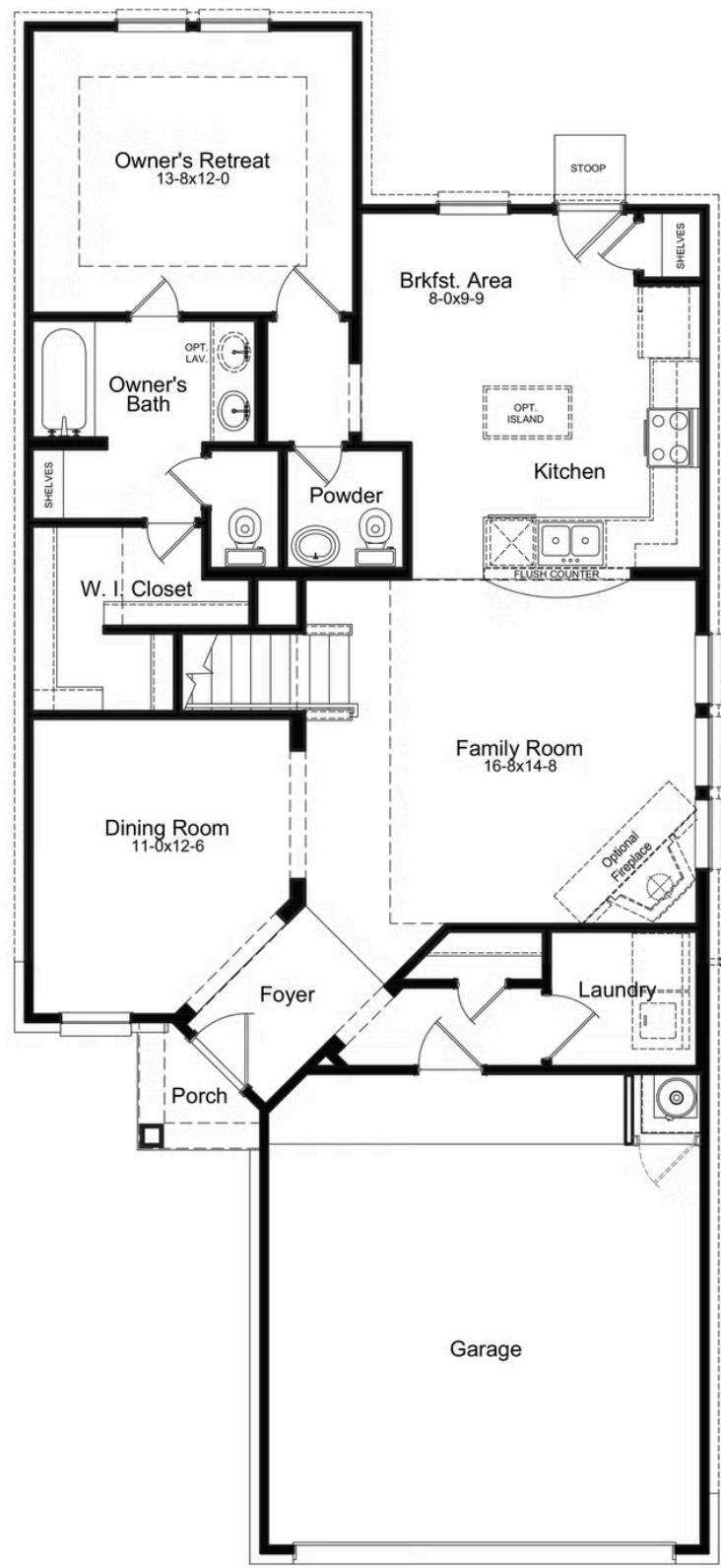
- 1,880 Sq. Ft.
- 3 Bedrooms
- 2 Full Baths
- 1 Half Bath
- 2 Stories
- 2 Garages

This move-in ready Roosevelt floorplan features a stunning two-story design, boasting 3 bedrooms and 2 ½ baths. The soaring ceilings in the two-story family room create a dramatic and spacious atmosphere, sure to impress. The owner's retreat showcases a tray ceiling, adding a touch of elegance to your personal retreat. The expansive kitchen and breakfast eating area provides ample space for culinary creations and casual dining, accommodating the needs of every household member. Indulge in the oversized game room, a versatile space perfect for recreation and entertainment. Photos are representative.

This new home in San Antonio, TX delivers modern design with open living spaces, a well-appointed kitchen and energy-saving features built to last. Its location within the [Timber Creek community in San Antonio, TX](#), provides easy access to local shopping, dining and outdoor activities, making it a smart choice for buyers who want the benefits of new construction without the wait.



ROOSEVELT 1ST FLOOR



5



ROOSEVELT 2ND FLOOR

