

823 LAUREL RUN SAN ANTONIO, TX 78219
210.610.2362

Birch

WILLOW POINT, SAN ANTONIO, TX

Home Starting At

\$315,990

[FirstAmericaHomes.com](https://www.FirstAmericaHomes.com)

[#FAHBuiltDifferent](https://twitter.com/FAHBuiltDifferent)

[@firstamericahomes](https://www.instagram.com/firstamericahomes)



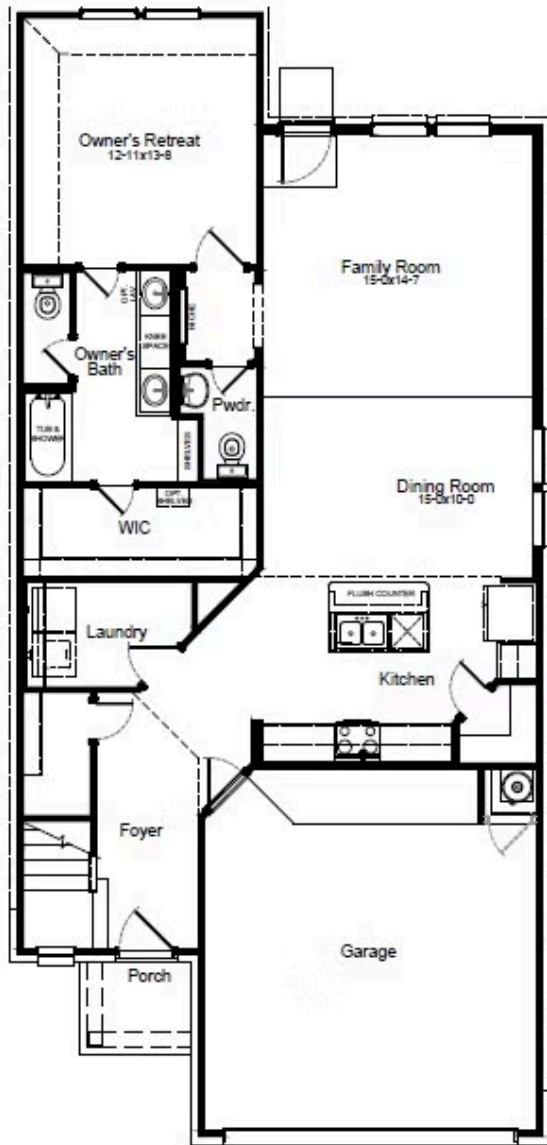
HOME FEATURES

- 2,026 Sq. Ft.
- 3 Beds
- 2.5 Baths
- 2 Stories
- 2 Garages

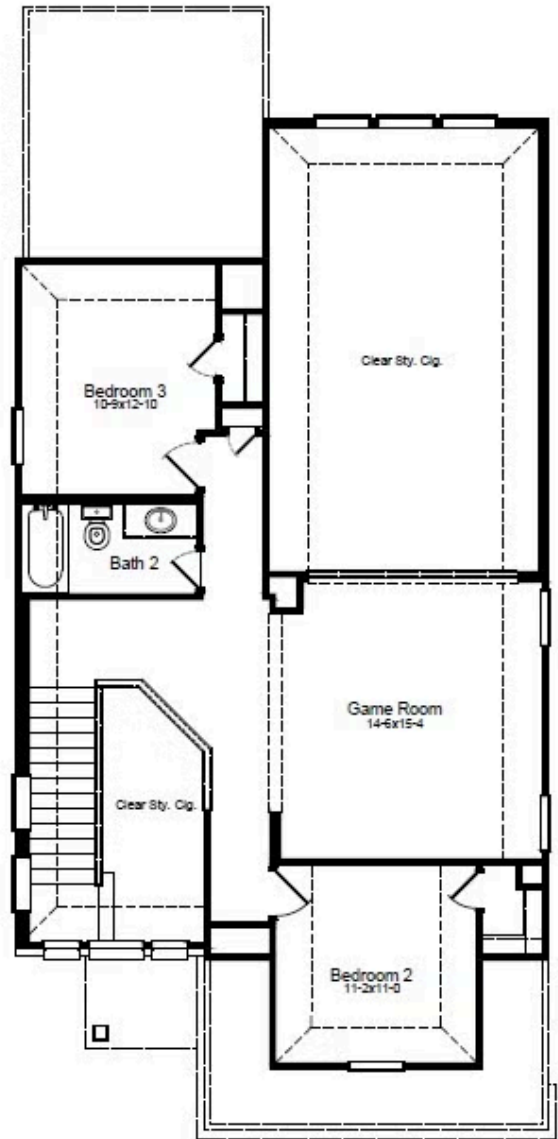
The Birch is a thoughtfully designed three-bedroom, two-and-a-half-bathroom home with soaring ceilings that create an open and airy feel throughout the main living spaces. The spacious owner's retreat provides a private escape, with the option to upgrade to a luxury bath for added relaxation. Upstairs, a versatile gameroom creates the ideal space for entertainment, work or play. Extend your living space outdoors with the optional covered patio and enjoy the outdoors year-round. Designed for modern living, the Birch is a home that fits your lifestyle.

BIRCH FLOORPLAN

1st Floor

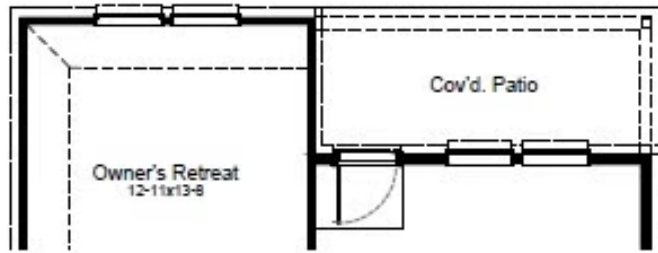


2nd Floor

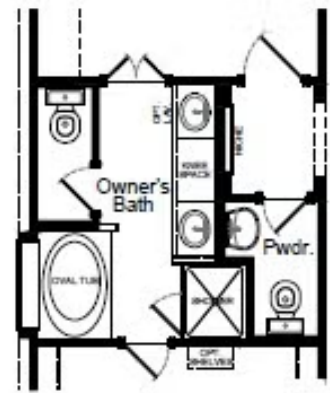


BIRCH OPTIONS

Options



Covered Patio



Luxury Bath Option