

Vail

WILLOW POINT, SAN ANTONIO, TX

Home Starting At

\$292,990

FirstAmericaHomes.com

#FAHBuiltDifferent

@firstamericaHomes



HOME FEATURES

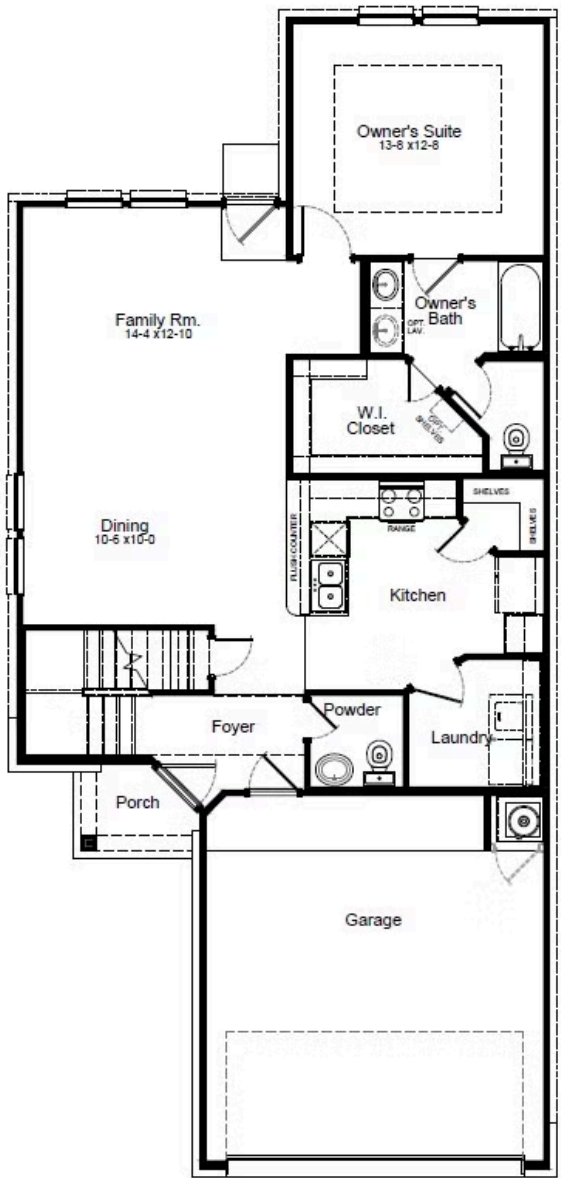
- 1,857 Sq. Ft.
- 4 Beds
- 2.5 Baths
- 2 Stories
- 2 Garages

The Vail floorplan is a stylish and functional four-bedroom, two-and-a-half bath home. The open living and dining areas seamlessly flow into the kitchen, creating a welcoming atmosphere for gatherings. The generously sized owner's suite features an ensuite bathroom for a private retreat, while the upstairs gameroom offers additional space for recreation and relaxation. Personalize your Vail home with optional upgrades, such as a covered back patio or an expanded patio for even more space to entertain. Enhance the owner's bathroom with a walk-in shower, making this floorplan both practical and luxurious.

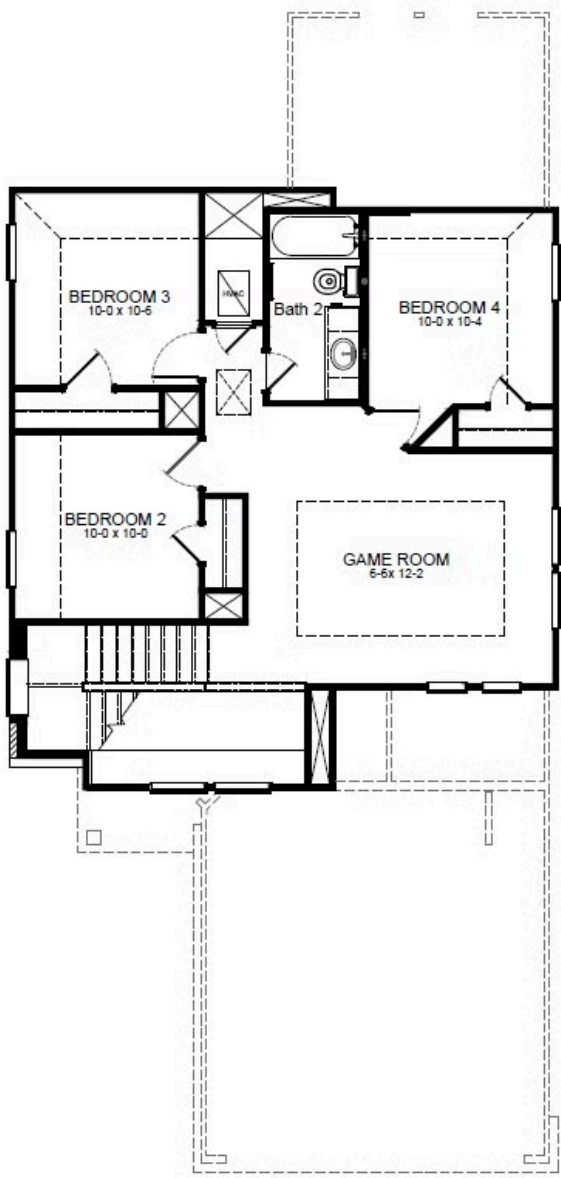


VAIL FLOORPLAN

1st Floor

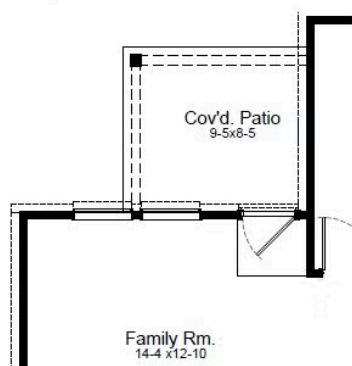


2nd Floor

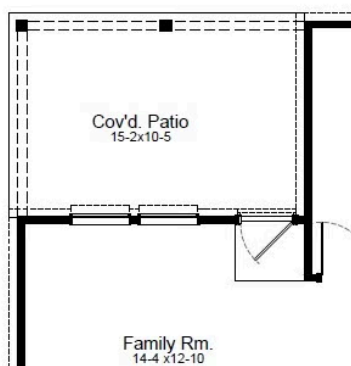


VAIL OPTIONS

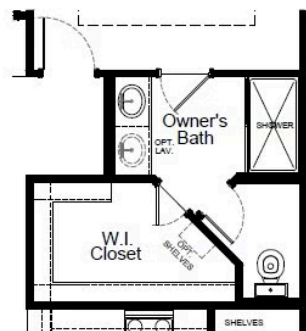
Options



Covered Patio



Expanded Covered Patio



Super Shower Option

