

## Arlington

SOUTHFORK RANCH, SEALY, TX

Home Starting At

# \$481,990

[FirstAmericaHomes.com](https://www.FirstAmericaHomes.com)

[#FAHBuiltDifferent](https://twitter.com/FAHBuiltDifferent)

[@firstamericahomes](https://www.instagram.com/firstamericahomes)



### HOME FEATURES

- 2,440 Sq. Ft.
- 4 - 5 Beds
- 2.5 - 3 Baths
- 1 Stories
- Garages

Welcome to the Arlington, a stunning four-bedroom, two and a half bathroom home with a study or a fifth bedroom and a third bathroom option. It features a spacious, open-concept layout and an expansive family room connected to a gourmet kitchen and a bright breakfast area. The luxurious owner's retreat is a private oasis with a spa-inspired bath and walk-in closet, while flexible options like an extended closet or a pedestal tub make it easy to fit your lifestyle. Enjoy outdoor living with a covered patio and a variety of garage options to suit your needs. Experience comfort, elegance, and versatility in every corner of this home.

# ARLINGTON FLOORPLAN

## Plan 2440



All information contained in this marketing material, including but not limited to pricing, availability, features, dimensions, specifications, drawings, maps, photographs, renderings, and other content, is provided for general informational purposes only and is subject to change without notice. While reasonable efforts have been made to ensure accuracy, First America Homes makes no warranties or representations, express or implied, as to the completeness, accuracy, or reliability of the information presented. First America Homes reserves the right, in its sole discretion and without prior notice, to modify, revise, or withdraw any information, plans, designs, pricing, or availability at any time. This material does not constitute a contract, offer, or promise and should not be relied upon as such. All sales are subject to the terms and conditions of the applicable purchase agreement. Void where prohibited by law. Updated 05/22/2026

# ARLINGTON OPTIONS

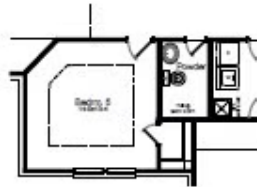
## Options



Covered Patio



Expanded Covered Patio



Bedroom 5 Option (ILO Study)



Bath 3 Option



Pedestal Tub Option



Extended Closet Option

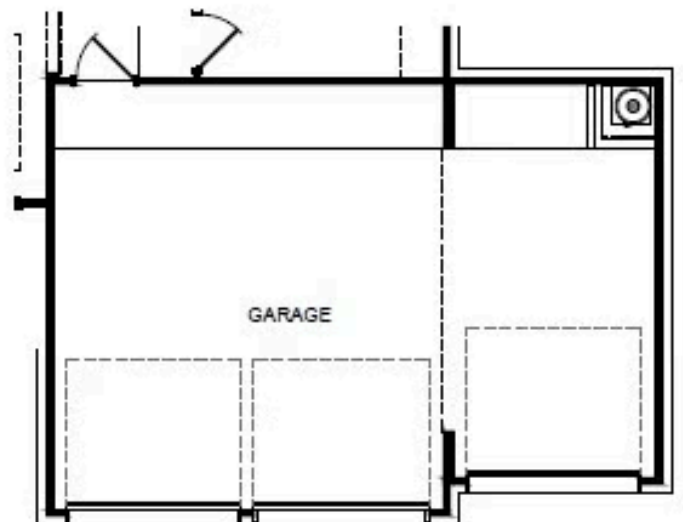


# ARLINGTON GARAGE OPTIONS

## Garage Options



2 1/2 Car Garage



3 Car Garage



# ARLINGTON SIDE LOAD GARAGE OPTIONS



All information contained in this marketing material, including but not limited to pricing, availability, features, dimensions, specifications, drawings, maps, photographs, renderings, and other content, is provided for general informational purposes only and is subject to change without notice. While reasonable efforts have been made to ensure accuracy, First America Homes makes no warranties or representations, express or implied, as to the completeness, accuracy, or reliability of the information presented. First America Homes reserves the right, in its sole discretion and without prior notice, to modify, revise, or withdraw any information, plans, designs, pricing, or availability at any time. This material does not constitute a contract, offer, or promise and should not be relied upon as such. All sales are subject to the terms and conditions of the applicable purchase agreement. Void where prohibited by law. Updated 05/22/2026