

Marlowe

CORDOVA CROSSING, SEGUIN, TX

Home Starting At

\$419,990

FirstAmericaHomes.com

#FAHBuiltDifferent

@firstamericahomes



HOME FEATURES

- 2,824 Sq. Ft.
- 5 Beds
- 3 Baths
- 2 Stories
- Garages

Step into the Marlowe, a spacious 5-bedroom, 3-bathroom home offering 2,824 square feet of thoughtful design and flexibility. With the owner's suite and an additional bedroom conveniently located downstairs, this layout is ideal for guests, multigenerational living or working from home. Three more bedrooms upstairs surround a large game room that opens to the floor below, creating a bright, open feel throughout the home.

The heart of the Marlowe is its open-concept living area, seamlessly connecting the family room, breakfast area and a beautifully designed kitchen. A butler's pantry adds style and convenience - perfect for storage, prep or entertaining.

Retreat to the owner's suite, featuring two spacious walk-in closets and the option for an expanded shower or a luxurious freestanding tub. It's the perfect private escape after a long day.

A tandem garage provides extra space for storage, hobbies or outdoor gear. Personalize your home even further with an optional extended covered patio for effortless outdoor living, or upgrade to a 2.5- or 3-car garage for added convenience.

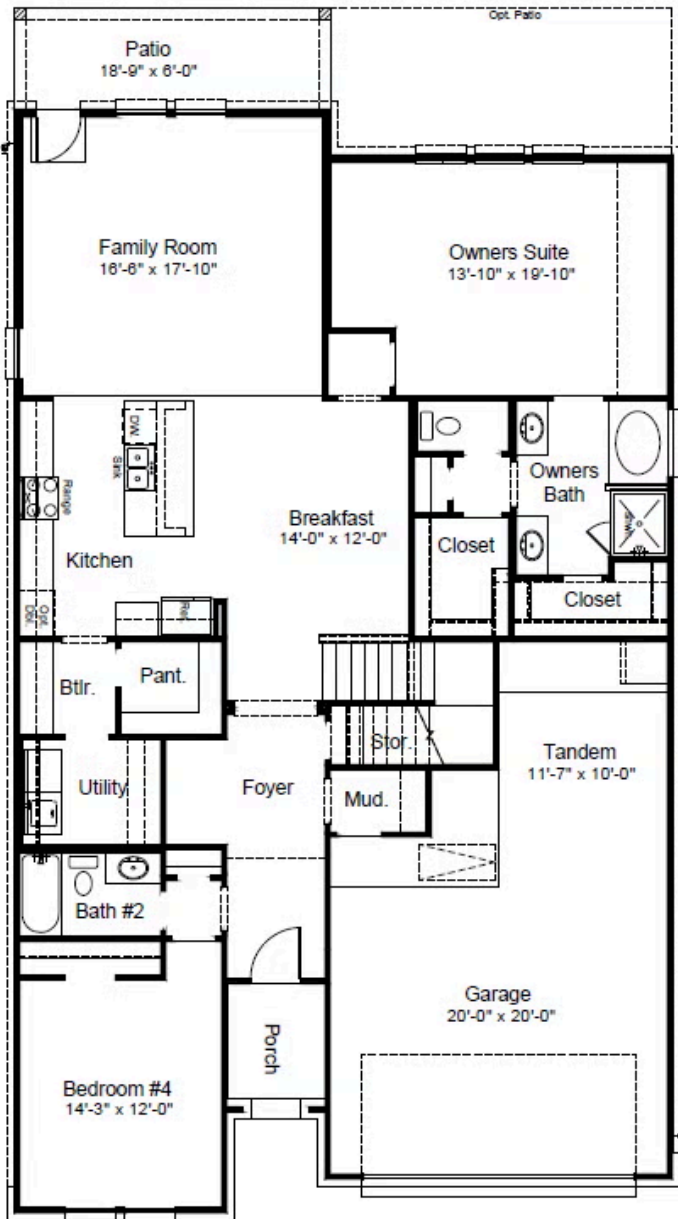
All information contained in this marketing material, including but not limited to pricing, availability, features, dimensions, specifications, drawings, maps, photographs, renderings, and other content, is provided for general informational purposes only and is subject to change without notice. While reasonable efforts have been made to ensure accuracy, First America Homes makes no warranties or representations, express or implied, as to the completeness, accuracy, or reliability of the information presented. First America Homes reserves the right, in its sole discretion and without prior notice, to modify, amend, or discontinue the information presented at any time. This information is not intended to constitute an offer, and should not be relied upon as such. All sales are subject to the terms and conditions of the applicable purchase agreement. Void where prohibited by law.

Updated 05/27/2026

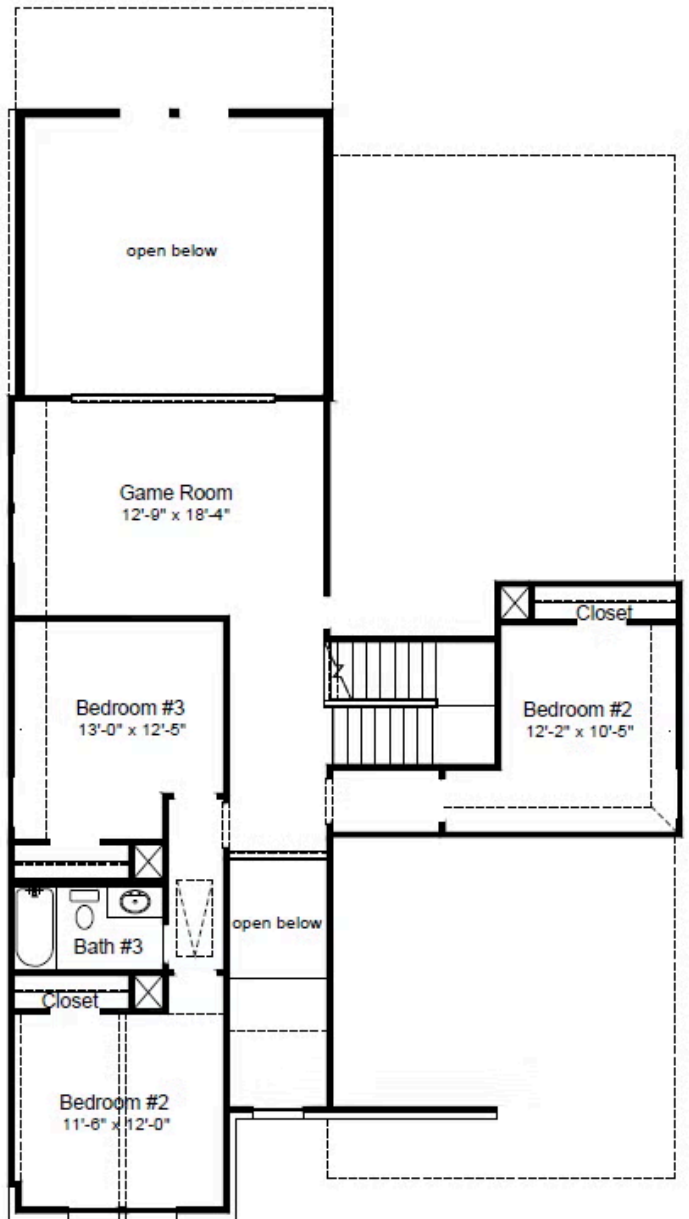
The Marlowe combines space, style and smart design, creating a home that adapts beautifully to the way you live.

MARLOWE FLOORPLAN

1st Floor

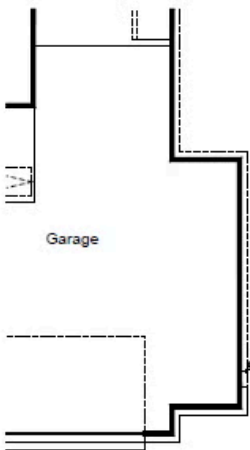


2nd Floor

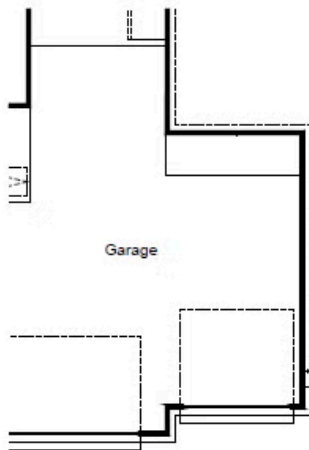


MARLOWE OPTIONS

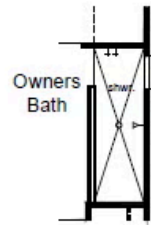
Options



3 1/2 Car Garage



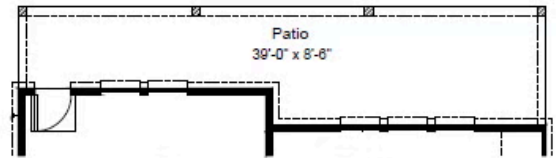
4 Car Garage



Super Shower



Free Standing Tub



Expanded Covered Patio

