

16024 Sandy Koufax  
Court

SPLENDORA, TX 77372

Priced At

**\$323,855**

FirstAmericaHomes.com

#FAHBuiltDifferent

@firstamericaHomes



**PLAN**

Hamilton

**HOME FEATURES**

- 2,656 Sq. Ft.
- 5 Bedrooms
- 3 Full Baths
- 1 Half Bath
- 2 Stories
- 2.5 Garages

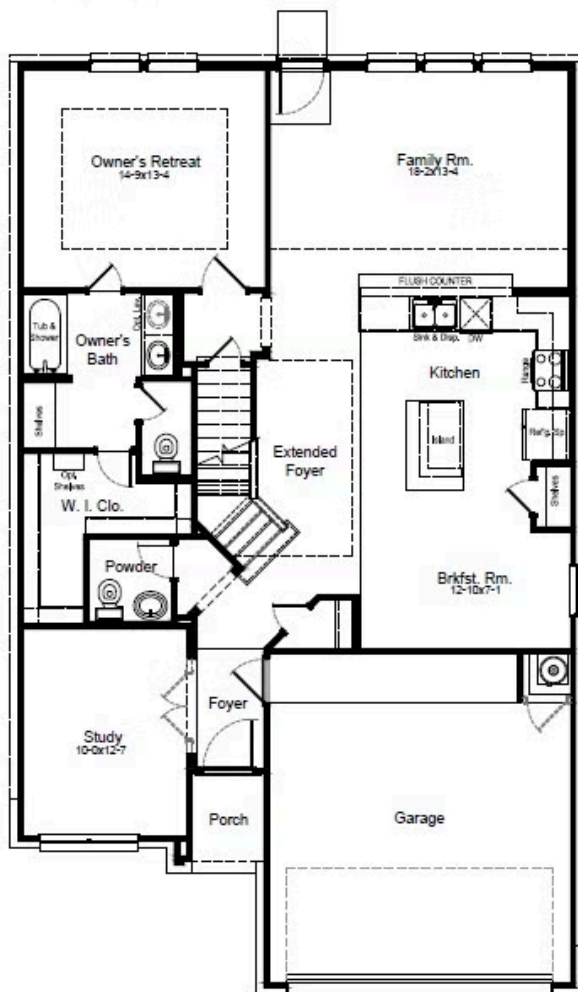
The Hamilton is a gorgeous floorplan boasting five bedrooms and three-and-a-half bathrooms. As you step inside, you'll be greeted by a grand foyer, followed by the study and a convenient powder bath. The spacious living area offers plenty of room for relaxation and entertainment. The well-appointed kitchen and adjacent breakfast area provide a perfect space for preparing meals and enjoying quality time with loved ones. The owner's suite, thoughtfully located at the back of the house, offers a tranquil retreat. Upstairs, you'll discover a gameroom and four bedrooms with large closets.

This new move-in ready home in Splendora, TX delivers modern design with open living spaces, a well-appointed kitchen and energy-saving features built to last. Its location within the [Splendora Fields community](#) in Splendora, TX, provides easy access to local shopping, dining and outdoor activities, making it a smart choice for buyers who want the benefits of new construction without the wait.



# HAMILTON FLOORPLAN D-F

1st Floor



2nd Floor

