

16048 Sandy Koufax  
Court

SPLENDORA, TX 77372

Priced At

\$360,692

FirstAmericaHomes.com

#FAHBuiltDifferent

@firstamericahomes



PLAN

Mansfield

HOME FEATURES

- 2,416 Sq. Ft.
- 5 Bedrooms
- 2 Full Baths
- 1 Half Bath
- 2 Stories
- 2.5 Garages

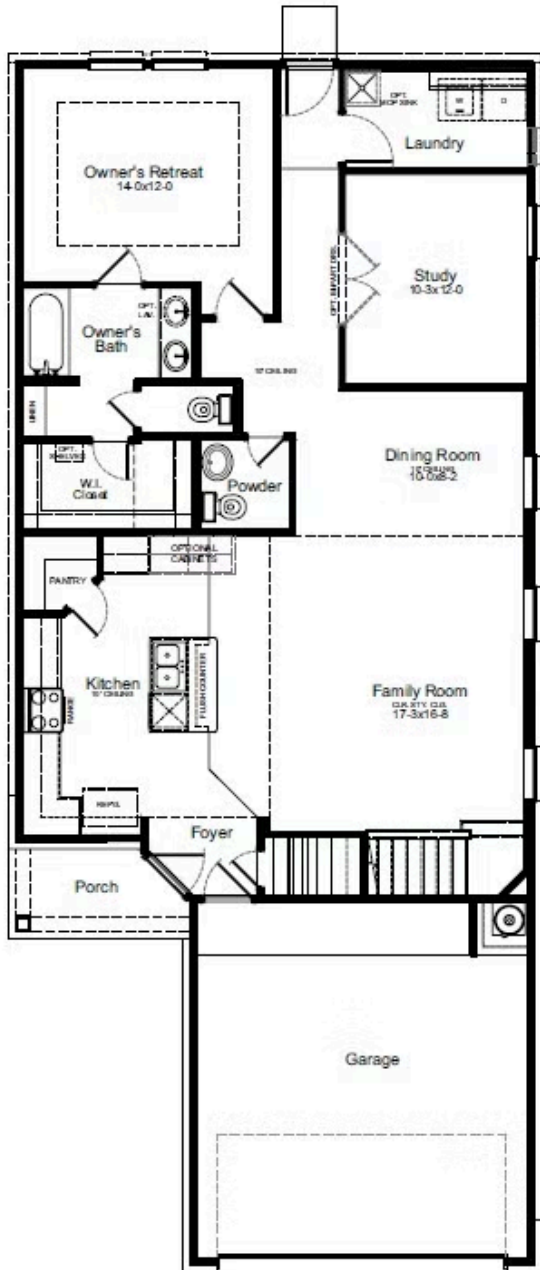
The Mansfield floorplan, designed with 2,416 square feet of space, offers a unique blend of comfort and style, perfect for modern living. This home features an inviting entrance that seamlessly connects to the spacious family room and kitchen for memorable gatherings. With five bedrooms, including an owner's suite with a walk-in closet and a luxurious bath, privacy and comfort are paramount. Additional highlights include a versatile study, a spacious laundry room, and a covered patio, perfect for outdoor enjoyment. The Mansfield is a testament to quality craftsmanship, blending functionality with elegance to create a space that feels like home.

This new move-in ready home in Splendora, TX delivers modern design with open living spaces, a well-appointed kitchen and energy-saving features built to last. Its location within the [Splendora Fields community](#) in Splendora, TX, provides easy access to local shopping, dining and outdoor activities, making it a smart choice for buyers who want the benefits of new construction without the wait.



# MANSFIELD FLOORPLAN

1st Floor



2nd Floor

