

**25468 Honus Wagner
Way**

SPLENDORA, TX 77372

Priced At

\$354,674

FirstAmericaHomes.com

#FAHBuiltDifferent

@firstamericahomes



PLAN

Polk

HOME FEATURES

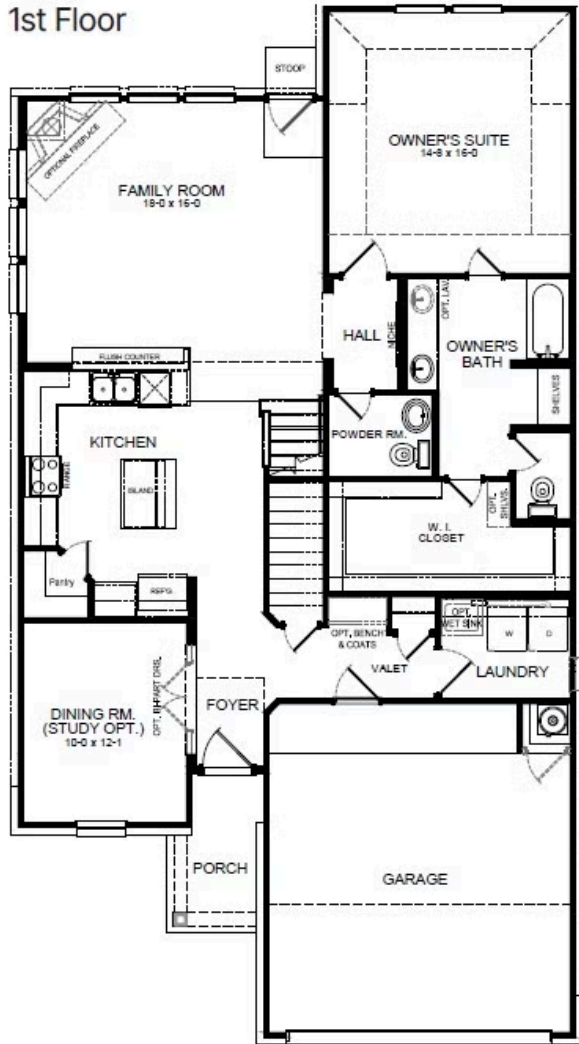
- 2,366 Sq. Ft.
- 4 Bedrooms
- 2 Full Baths
- 1 Half Bath
- 2 Stories
- 2.5 Garages

The Polk floorplan is an elegant four-bedroom, two-and-a-half bath home with the option for a fifth bedroom or media room. A grand two-story foyer welcomes you, leading to a bright living room with large windows that fill the space with natural light. The open kitchen, featuring a spacious peninsula bar, is both stylish and functional - perfect for entertaining. The oversized owner's suite offers a luxurious retreat with an enormous walk-in closet for ample storage. Upstairs, the gameroom provides versatile space to relax and enjoy. The Polk floorplan is ideal for families seeking both comfort and functionality.

This new move-in ready home in Splendora, TX delivers modern design with open living spaces, a well-appointed kitchen and energy-saving features built to last. Its location within the [Splendora Fields community](#) in Splendora, TX, provides easy access to local shopping, dining and outdoor activities, making it a smart choice for buyers who want the benefits of new construction without the wait.

POLK FLOORPLAN

1st Floor



2nd Floor

